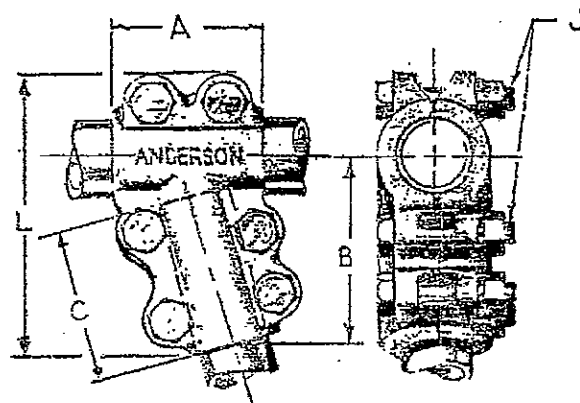


C-4862

TYPE ATT-15

Tubing Angle Tee



THE USE OF THESE TEES WITH TYPE ATT2-15 TEE SUPPORTS GIVE A SELF SUPPORTING BUS STRUCTURE AND THEREBY REDUCES THE NUMBER OF INSULATORS AND OTHER SUPPORT MEMBERS.
 STANDARD TAPS ARE 15° FROM THE VERTICAL. OTHER ANGLES CAN BE SUPPLIED.
 MATERIAL - CONNECTOR: HIGH STRENGTH HEAT TREATED ALUMINUM.
 HARDWARE: HIGH STRENGTH HEAT TREATED ALUMINUM.
 INSTALLATION - ONE WRENCH REQUIRED.
 REFER TO TECHNICAL DATA PAGE TD-1 FOR INSTALLATION INFORMATION.

CATALOG NUMBER	CONDUCTOR IPS		INCHES/MILLIMETERS				
	MAIN	TAP	A	B	C	J	L
ATT-15-0606	3/4	3/4	2.50/63.5	3.50/88.9	2.50/63.5	0.5/12.7	5.25/133.4
ATT-15-1006	1	3/4	2.75/69.9	3.69/93.7	2.50/63.5	0.5/12.7	5.5/139.7
ATT-15-1206	1 1/4	3/4	3.00/76.2	3.80/96.5	2.50/63.5	0.5/12.7	5.94/150.9
ATT-15-1210	1 1/4	1	3.00/76.2	4.06/103.1	2.50/63.5	0.5/12.7	6.06/153.9
ATT-15-1212	1 1/4	1 1/4	3.00/76.2	4.12/104.6	3.00/76.2	0.5/12.7	6.06/153.9
ATT-15-1406	1 1/2	3/4	3.25/82.6	3.94/100	2.50/63.5	0.5/12.7	6.06/153.9
ATT-15-1410	1 1/2	1	3.25/82.6	4.12/104.6	2.75/69.9	0.5/12.7	6.25/158.8
ATT-15-1412	1 1/2	1 1/4	3.25/82.6	4.50/114.3	3.00/76.2	0.5/12.7	6.69/169.9
ATT-15-2010	2	1	3.50/88.9	4.38/111.3	2.75/69.9	0.5/12.7	6.81/173
ATT-15-2012	2	1 1/4	3.50/88.9	4.75/120.7	3.12/79.2	0.5/12.7	7.19/182.6
ATT-15-2014	2	1 1/2	3.50/88.9	5.12/130.1	3.38/85.9	0.5/12.7	7.62/193.5
ATT-15-2020	2	2	3.50/88.9	4.62/117.3	2.69/68.3	0.5/12.7	7.12/180.8
ATT-15-2410	2 1/2	1	3.75/95.3	4.62/117.3	2.75/69.9	0.5/12.7	7.31/185.7
ATT-15-2412	2 1/2	1 1/4	3.75/95.3	5.00/127	3.12/79.2	0.5/12.7	7.5/190.5
ATT-15-2414	2 1/2	1 1/2	3.75/95.3	5.31/134.9	3.25/82.6	0.5/12.7	8.06/204.7
ATT-15-2420	2 1/2	2	3.75/95.3	5.62/142.7	3.50/88.9	0.5/12.7	8.38/212.9
ATT-15-2424	2 1/2	2 1/2	3.75/95.3	6.00/152.4	3.75/95.3	0.5/12.7	8.88/225.6
ATT-15-3014	3	1 1/2	4.00/101.6	5.38/136.7	3.25/82.6	0.5/12.7	8.44/214.4
ATT-15-3020	3	2	4.00/101.6	6.00/152.4	3.50/88.9	0.5/12.7	9.06/230.1
ATT-15-3024	3	2 1/2	4.00/101.6	6.25/158.8	3.75/95.3	0.5/12.7	9.44/239.8
ATT-15-3030	3	3	4.00/101.6	6.62/168.1	4.00/101.6	0.5/12.7	9.88/251
ATT-15-3412	3 1/2	1 1/4	4.25/108	5.69/144.5	3.00/76.2	0.5/12.7	8.94/227.1
ATT-15-3414	3 1/2	1 1/2	4.50/114.3	5.62/142.7	3.00/76.2	0.5/12.7	8.94/227.1
ATT-15-3420	3 1/2	2	4.50/114.3	6.25/158.8	3.50/88.9	0.5/12.7	9.62/244.3
ATT-15-3424	3 1/2	2 1/2	4.25/108	6.44/163.6	3.75/95.3	0.5/12.7	9.81/249.2
ATT-15-3430	3 1/2	3	4.25/108	6.56/166.6	3.75/95.3	0.5/12.7	10.06/255.5
ATT-15-3434	3 1/2	3 1/2	4.25/108	7.19/182.6	4.25/108	0.62/15.7	10.94/277.9
ATT-15-4020	4	2	4.00/101.6	6.44/163.6	3.50/88.9	0.5/12.7	10.06/255.5
ATT-15-4024	4	2 1/2	4.00/101.6	6.81/173	3.75/95.3	0.5/12.7	10.5/266.7
ATT-15-4030	4	3	4.25/108	7.19/182.6	4.00/101.6	0.5/12.7	11/279.4
ATT-15-5014	5	1 1/2	5.00/127	6.88/174.8	3.25/82.6	0.5/12.7	11.06/280.9
ATT-15-5024	5	2 1/2	5.00/127	7.38/187.5	3.75/95.3	0.5/12.7	11.75/298.5
ATT-15-5030	5	3	5.00/127	8.00/203.2	4.25/108	0.62/15.7	12.21/310.1
ATT-15-5034	5	3 1/2	5.00/127	8.00/203.2	4.25/108	0.62/15.7	12.56/319
ATT-15-6030	6	3	6.00/152.4	8.19/208.1	4.00/101.6	0.62/15.7	13.25/336.6
ATT-45-2414	2 1/2	1 1/2	3.75/95.3	4.88/124	3.25/82.6	0.5/12.7	8.25/209.6
ATT-15-1010	1	1	2.75/69.9	5.87/149.2	2.75/69.9	0.5/12.7	6.13/155.6

SHT 1 OF 3

TEE CONNECTOR TUBE TO TUBE

		01	ECN 1845B UPDATE CHART	01/05/01	HUBBELL POWER SYSTEMS, INC.		
		02	ADD ITEM ATT-15-80MM 24 EC11615	11/11/04			
		03	ADD ATT-15-1010 EC-20300	11/14/06			
		REV.	REMARKS	DATE	PART NAME	SCALE	
					TEE, AL BOLTED TUBE ANGLE	N/A	
					ATT-15 SEE TABLE		
					DESIGN JLH	DATE 01/05/01	DWG. NO. C-4862
					DRAWN JVR	DATE 01/05/01	REV. NO. 03
REV.	REMARKS	DATE	THIS DRAWING AND THE INFORMATION IT CONTAINS ARE OWNED BY HUBBELL POWER SYSTEMS, INC. THIS DRAWING IS LOANED ON CONDITION THAT IT SHALL NOT BE PUBLISHED, DISCLOSED, REPRODUCED, COPIED, OR USED FOR MAKING OTHER DRAWINGS, APPARATUS, OR PARTS WITHOUT WRITTEN APPROVAL OF THE OWNER IN EACH INSTANCE. RECIPIENT AGREES TO THIS CONDITION BY ACCEPTANCE OF THIS DRAWING.				

C-4862

CATALOG NUMBER	PART NUMBER	PART NUMBER	DESCRIPTION
ATT-15-0606		1001770000	BOLT, HH AL 1/2 13 X 2 1/4
ATT-15-1006	2	1002010000	BOLT, HH AL 1/2 13 X 3 FULL THD
ATT-15-1206		1001830000	BOLT, HH ALL 1/2 13 X 2 1/2
ATT-15-1210	2	1002190000	BOLT, HH AL 1/2 13 X 3 1/2 THD3
ATT-15-1212		1002010000	BOLT, HH AL 1/2 13 X 3 FULL THD
ATT-15-1406	2	1040410000	NUT, ALUM WAX 1/2-13
ATT-15-1410	2	1069920000	WASHER, ALUM LOCK 1/2
ATT-15-1412		3194381000	CAP, HALF ATT 15 1006
ATT-15-2010	2	3095911000	CAPP, ATT 15 1210 HALF
ATT-15-2012		3240261000	CAP, HALF ATT 15 1406
ATT-15-2014		3075841000	CAP, HALF ATT 15 1410
ATT-15-2020		3199652000	CAP, HALF ATT 15 1412
ATT-15-2410	2	3090091000	BODY, ATT 15 2010 HLF
ATT-15-2412		3091901000	CAP, ATT 15 2012 HALF
ATT-15-2414		3129971000	CAP, ATT 15 2014 HALF
ATT-15-2420		3162441000	CAP, HALF ATT 15 2020
ATT-15-2424		3077471000	CAP, ATT 15 2410 HALF
ATT-15-3014	2	3094081000	CAP, ATT 15 2412 HALF
ATT-15-1010	6	3133491000	BODY, ATT 15 2414 HLF
		3157341000	CAP, HALF ATT 15 2420
		3149261000	CAP, ATT 15 2424 HALF
		3072051000	CAP, HALF ATT 15 3014
		3194382000	BODY, ATT 15 1006
		3095912000	BODY, ATT 15 1210 HLF
		3240262000	BODY, ATT 15 1406
		3075842000	BODY, ATT 15 1410
		3199651000	BODY, HALF ATT 15 1412
		3090092000	BODY, ATT 15 2010 HALF
		3091902000	BODY, ATT 15 2012
		3129972000	BODY, ATT 15 2014 HALF
		3162442000	BODY, ATT 15 2020
		3077472000	BODY, ATT 15 2410 HALF
		3094082000	BODY, ATT 15 2412 HALF
		3133492000	BODY, ATT 15 2414 HALF
		3157342000	BODY, HALF ATT 15 2420
		3149262000	BODY, ATT 15 2424 HALF
		3072052000	BODY, HALF ATT 15 3014
		3106881000	BODY, HALF ATT 15 1010
		3106882000	BODY, HALF ATT 15 1010

SHT 2 OF 3 TEE CONNECTOR TUBE TO TUBE

01	ECN 18458 UPDATE CHART	01/05/01	HUBBELL POWER SYSTEMS, INC.	
02	ADD ITEM ATT-15-80MM 24 EC11615	11/11/04		
03	ADDED ITEM ATT-15-1010 EC 20300	11/17/06		
REV.	REMARKS	DATE	PART NAME	SCALE
			TEE, AL BOLTED TUBE ANGLE	N/A
			ATT-15 SEE TABLE	
REV.	REMARKS	DATE	DESIGN	DWG. NO.
			JLH	C-4862
			DRAWN	REV. NO.
			JVR	03

THIS DRAWING AND THE INFORMATION IT CONTAINS ARE OWNED BY HUBBELL POWER SYSTEMS, INC. THIS DRAWING IS LOANED ON CONDITION THAT IT SHALL NOT BE PUBLISHED, DISCLOSED, REPRODUCED, COPIED, OR USED FOR MAKING OTHER DRAWINGS, APPARATUS, OR PARTS WITHOUT WRITTEN APPROVAL OF THE OWNER IN EACH INSTANCE. RECIPIENT AGREES TO THIS CONDITION BY ACCEPTANCE OF THIS DRAWING.

C-4862

CATALOG NUMBER	PART NUMBER	PART NUMBER	DESCRIPTION
ATT-15-3020	2	1002010000	BOLT, HH AL 1/2 13 X 3 FULL THD
ATT-15-3024	2	1002910000	BOLT, HH AL 5/8-11 X 3 1/2
ATT-15-3030		1002190000	BOLT, HH AL 1/2 13 X 3 1/2 THD3
ATT-15-3412		1002310000	BOLT, HH AL 1/2 13 X 4
ATT-15-3414	2	1003330000	BOLT, HH AL 5/8-11 X 5 1/2
ATT-15-3420	2	1003150000	BOLT, HH AL 5/8-11 X 4 1/2 TD 3 1/2
ATT-15-3424	2	1040410000	NUT, ALUM WAX 1/2-13
ATT-15-3430		104042000	NUT, ALUM WAX 5/8-11
ATT-15-3434		1069920000	WASHER, ALUM LOCK 1/2
ATT-15-4020	2	1069980000	WASHER, ALUM LOCK 5/8
ATT-15-4024	2	3138001000	CAP, ATT 15 3020 HALF
ATT-15-4030		3110071000	CAP, ATT 15 3024 HALF
ATT-15-5014		3234391000	CAP, HALF ATT 15 3030
ATT-15-5024	6	3107701000	CAP, ATT 15 3414 HALF
ATT-15-5030		3147331000	BODY, ATT 15 3420 HALF
ATT-15-5034		3168241000	CAP, HALF, ATT 15 3424
ATT-15-6030		3168031000	BODY, HALF ATT 15 3430
ATT-45-2414	7	3193721000	CAP, HALF ATT 15 3434
ATT-15-80MM 24	2	3098811000	CAP, ATT 15 4020 HALF
		3110081000	CAP, ATT 15 4024 HALF
		3234341000	CAP, HALF ATT 15 4030
		3110091000	CAP, ATT 15 5024 HALF
		319368100	BODY, HALF ATT 15 5034
		3112591000	CAP, ATT 45 2514 HALF
		3239831000	CAP, HALF ATT 15 5030
		3138002000	BODY, ATT 15 3020 HLAIF
		3110072000	BODY, ATT 15 3024
		3234392000	BODY, ATT 15 3030
		3107702000	BODY, ATT 15 3414
		3147332000	BODY, ATT 15 3420 HALF
		3168242000	BODY, ATT 15 3424
		3168032000	BODY, HALF ATT 15 3430
		3193722000	BODY, ATT 15 3434
		3098812000	BODY, ATT 15 4020 HLF
		3110082000	BODY, ATT 15 4024 HLF
		3234342000	BODY, ATT 14 4030
		3110092000	BODY, ATT 15 5024
		3193682000	BODY, HALF ATT 15 5034
		3112592000	BODY, ATT 45 2414
		3239832000	BODY, ATT 15 5030
		PSC3110073000	CAP,HLAF ATT 1580MM24
		PSC3110074000	BODY, ATT 15 80MM24

SHT 3 OF 3 TEE CONNECTOR TUBE TO TUBE

		01	ECN 18458 UPDATE CHART	01/05/01	HUBBELL POWER SYSTEMS, INC.							
		02	ADD ITEM ATT-15-80MM 24 EC11615	11/11/04								
		03	ADDED ITEM ATT-15-1010	11/17/06								
		REV.	REMARKS	DATE	PART NAME	TEE, AL BOLTED TUBE ANGLE		SCALE				
						ATT-15 SEE TABLE		N/A				
		THIS DRAWING AND THE INFORMATION IT CONTAINS ARE OWNED BY HUBBELL POWER SYSTEMS, INC. THIS DRAWING IS LOANED ON CONDITION THAT IT SHALL NOT BE PUBLISHED, DISCLOSED, REPRODUCED, COPIED, OR USED FOR MAKING OTHER DRAWINGS, APPARATUS, OR PARTS WITHOUT WRITTEN APPROVAL OF THE OWNER IN EACH INSTANCE. RECIPIENT AGREES TO THIS CONDITION BY ACCEPTANCE OF THIS DRAWING.			DESIGN	JLH	DATE	01/05/01	DWG. NO.	C-4862	REV. NO.	03
REV.	REMARKS				DATE	DRAWN	JVR	DATE	01/05/01			